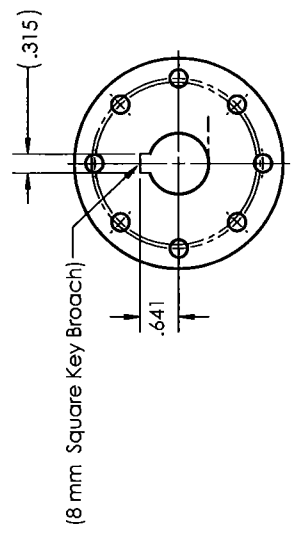
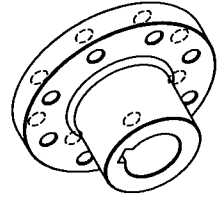
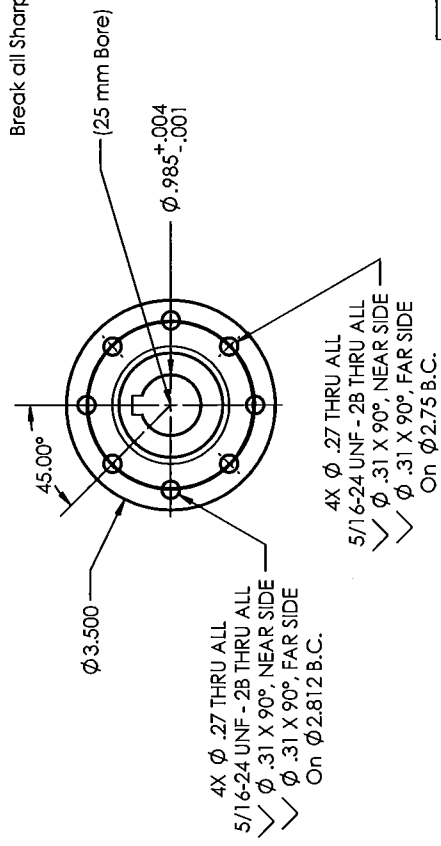
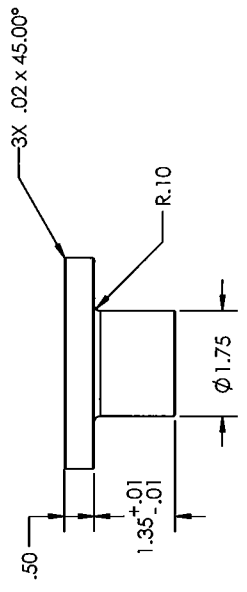


1. ALL DIMENSIONS ARE FROM THEORETICAL SHARP CORNERS

2. MATERIAL: 60661 Aluminum

3. FINISH: Tumble Debur

REVISION			
REV.	DESCRIPTION	DATE	APPRO.
A	Initial Release Design	2/19/2020	JD
B	Made Dimension Changes	4/2/2020	JD



ASSEM./PART NO.		NPC-P0026404	
NPC Robotics			
MATERIAL		Mound, MN (952)-472-1513	
DWG. TITLE: MPP 36 Hub Adaptor			
FINISH	NAME	DATE	REV
2.	John David	07/16/2011	B
DRAWN		SIZE	
3.		B	
CHECKED		DRAWING NO.	
ENG APPR.		NPC-P0026404	
MFG APPR.		SCALE:	
I.A.		SHEET 1 OF 1	

APPLICABLE STANDARDS/SPECIFICATIONS
ASME Y14.5-2009

WARNING:
THIS DOCUMENT CONTAINS TECHNICAL DATA WHOSE EXPORT IS RESTRICTED BY THE ARMS EXPORT CONTROL ACT (22 USC 1778), THE EAR (22 CFR 120.15), OR THE EXPORT ADMINISTRATION ACT (E.O. 13081). A LICENSE FROM THE U.S. DEPARTMENT OF COMMERCE (DD FORM 1575) IS REQUIRED FOR EXPORT TO A FOREIGN PERSON OR ENTITY WITHOUT THE PROPER AUTHORIZATION OF THE U.S. DEPARTMENT OF COMMERCE. IT IS THE SOLE RESPONSIBILITY OF THE USER TO OBTAIN THE NECESSARY EXPORT PERMITS AND TO DISSEMINATE ONLY IN ACCORDANCE WITH THE PROVISIONS OF 22 USC 1778 AND 22 CFR 120.15.

UNLESS OTHERWISE SPECIFIED: DIMENSIONS ARE IN INCHES
All Dimensions are BASIC and controlled by CAD Model and Controlled Simultaneously

DO NOT SCALE DRAWING
THE INFORMATION CONTAINED IN THIS DRAWING IS THE SOLE PROPERTY OF NPC ROBOTICS. ANY REPRODUCTION OR TRANSMISSION IN ANY FORM OR BY ANY MEANS WITHOUT THE WRITTEN PERMISSION OF NPC ROBOTICS IS PROHIBITED.

SOME OR ALL OF THE COMPONENTS OF THIS DRAWING/ASSEMBLY ARE COVERED BY PATENTS OWNED BY NPC ROBOTICS, INC. AND THEIR USE OR DUPLICATION IS STRICTLY PROHIBITED. FOR FURTHER INFORMATION SEE NPC.ROBOTICS.COM/NEWS/PATENTS.