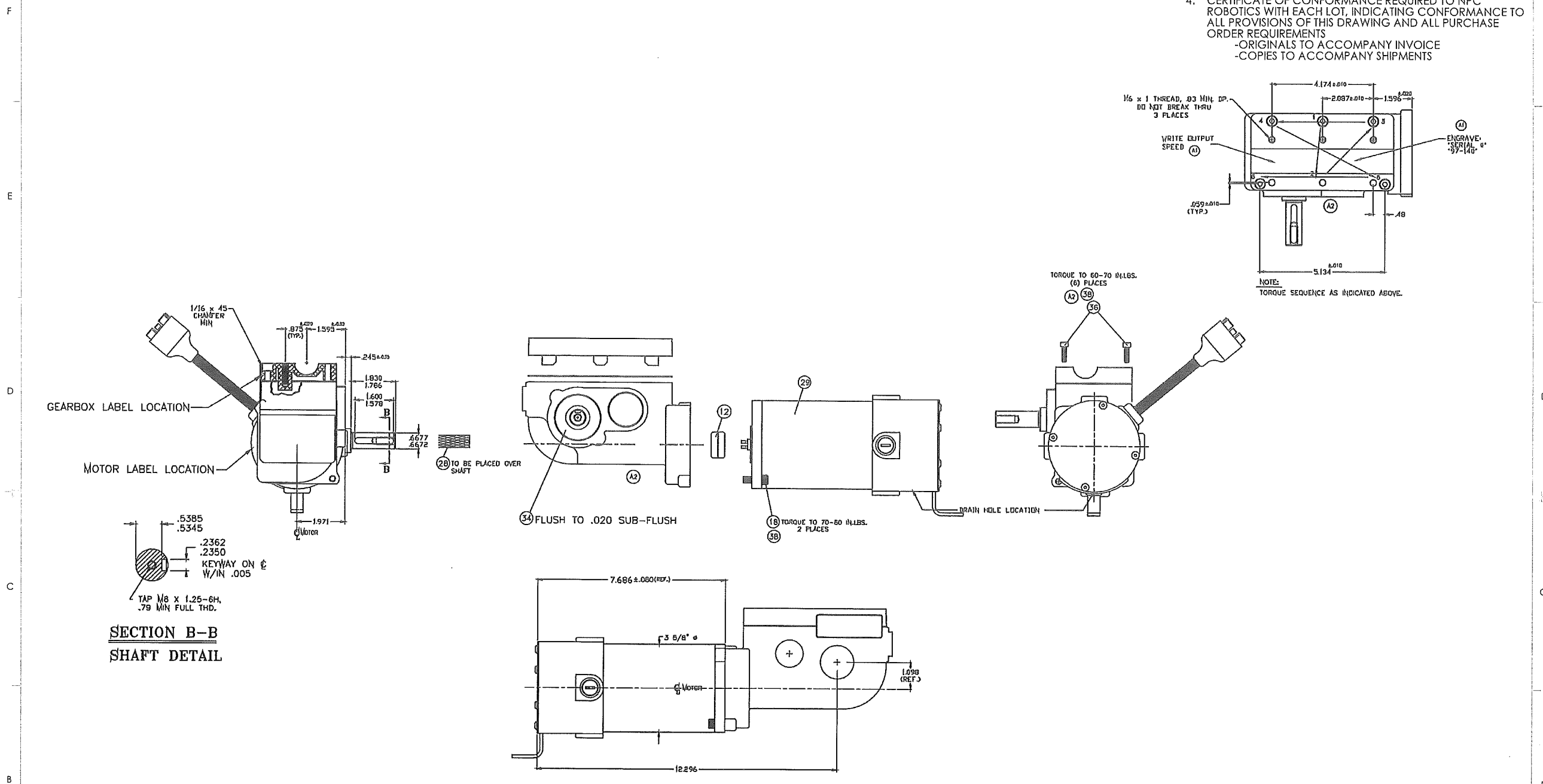


REVISION			
REV.	DESCRIPTION	DATE	APPRO.

1. ALL DIMENSIONS ARE FROM THEORETICAL SHARP CORNERS
2. MATERIAL:
3. FINISH:
4. CERTIFICATE OF CONFORMANCE REQUIRED TO NPC ROBOTICS WITH EACH LOT, INDICATING CONFORMANCE TO ALL PROVISIONS OF THIS DRAWING AND ALL PURCHASE ORDER REQUIREMENTS
  - ORIGINALS TO ACCOMPANY INVOICE
  - COPIES TO ACCOMPANY SHIPMENTS



**MOTOR SPECIFICATIONS**  
 MOTOR VOLTAGE IS 24V  
 FREE SPEED: 170-190 RPM  
 FREE SPEED CURRENT: 6.5 AMPS MAX.  
 ROTATION: CW AS VIEWED FROM SHAFT END WITH RED LEAD/RED HOUSING +  
 NOISE: 60 DBa MAX. IN BOTH DIRECTIONS.  
 (A1) MOTOR MUST BE RUN (FREE SPEED) FOR 20 MIN AND CHECKED FOR LEAKAGE.

- NOTE:**
1. CHECK MOTOR/GEARBOX FOR NOISE NO LOAD BOTH DIRECTIONS.
  2. CHECK MOTOR/GEARBOX FOR NOISE IN BOTH DIRECTIONS AT 35 IN.LBS. (8 AMPS)
  3. LISTEN FOR ABNORMAL GEAR NOISE SUCH AS RUNOUT, KNOCKING, GRINDING, OR CLICKING IN BOTH DIRECTIONS.

**SOME OR ALL OF THE COMPONENTS OF THIS DRAWING/ASSEMBLY ARE COVERED BY PATENTS OWNED BY NPC ROBOTICS, INC. AND THEIR USE OR DUPLICATION IS STRICTLY PROHIBITED. FOR FURTHER INFORMATION SEE NPCROBOTICS.COM/NEWS/PATENTS.**

APPLICABLE STANDARDS/SPECIFICATIONS		UNLESS OTHERWISE SPECIFIED: DIMENSIONS ARE IN INCHES		ASSEMBLY/PART NO. NPC-B81	
ASME Y14.5-2009		All Dimensions are BASIC and controlled by CAD Model and Controlled Simultaneously		MATERIAL: 2	
WARNING: THIS DOCUMENT CONTAINS TECHNICAL DATA WHOSE EXPORT IS RESTRICTED BY THE ARMS EXPORT CONTROL ACT (TITLE 22, U.S.C. SEC 2551 (b) (2)) OR THE EXPORT ADMINISTRATION ACT OF 1979, AS AMENDED (TITLE 50 U.S.C. APP 2401 (f) (2)). VIOLATIONS OF THESE EXPORT LAWS ARE SUBJECT TO SEVERE CRIMINAL PENALTIES. THIS INFORMATION MUST NOT BE TRANSMITTED TO A FOREIGN PERSON OR ENTITY WITHOUT THE PROPER AUTHORIZATION OF THE U.S. GOVERNMENT. VIOLATIONS MAY RESULT IN CIVIL, ADMINISTRATIVE, OR CRIMINAL PENALTIES. DISSEMINATE ONLY IN ACCORDANCE WITH THE PROVISIONS OF E.O. EXECUTIVE 12958-2.		PROPRIETARY AND CONFIDENTIAL THE INFORMATION CONTAINED IN THIS DRAWING IS THE SOLE PROPERTY OF NPC ROBOTICS. ANY REPRODUCTION IN PART OR AS A WHOLE WITHOUT THE WRITTEN PERMISSION OF NPC ROBOTICS IS PROHIBITED.		FINISH: 3	
DO NOT SCALE DRAWING		DRAWN: Admin		DATE: 09/16/2011	
CHECKED:		NAME:		DWG. TITLE: NPC-B81	
ENG APPR.:		DATE:		MOUND, MN (952)-472-1513	
MFG APPR.:		SCALE: C		DRAWING REF. NO.:	
Q.A.:		WEIGHT:		REV:	
		SHEET 1 OF 1			